



HOMESTEAD SERIES

THE EMERSON

2-4 Bedrooms | 2-2.5 Bathrooms | Study | 2-Car Garage | 1,993+ Square Feet



FEATURES:

- Award-Winning 2 Bedroom | 2 Bath Ranch Home | Study
- Second Floor Attic Storage Accessed by Permanent Stairs
- Owner's Suite with Luxurious Bath and Walk-in Shower with Bench Seat
- Island Kitchen Opens to Great Room and Formal Dining Area
- Great Room Wall of Windows Overlooks Covered Rear Patio

A 55 OR BETTER COMMUNITY FROM THE MID \$300s

4511 Macland Road | Hiram, GA 30141 | 678.401.2306 | WindsongLife.com



All illustrations, specifications, pricing and details are believed correct at the time of publication, Windsong Properties reserves the right to make changes, without notice or obligation. This brochure is for illustrative purposes only and not part of a legal contract. Information subject to changes, errors and omissions. Echols Farm is a community designed for residents aged 55 and older. © 2020 Windsong Properties

2.16.22





ELEVATION A2



ELEVATION B2



ELEVATION C2



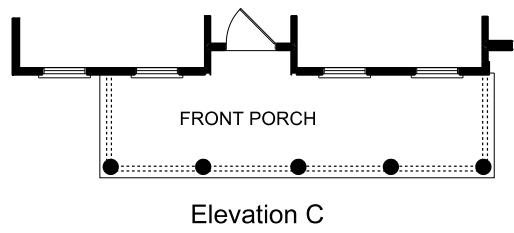
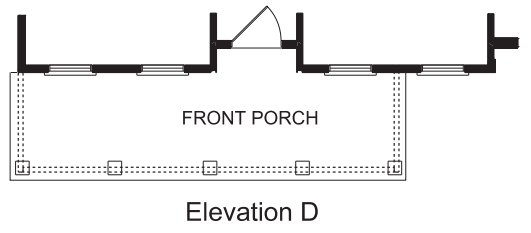
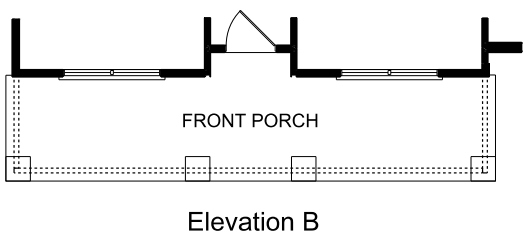
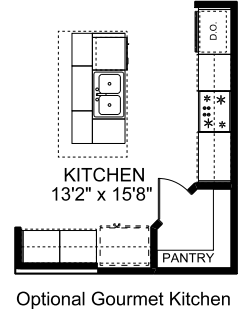
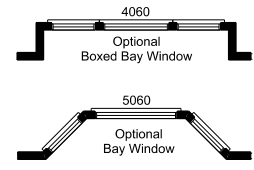
ELEVATION D2

Shutters are pre-determined per plan and are not optional.
Brick homes receive raised panel shutters, per plan.
Stone homes receive board and batten shutters, per plan.

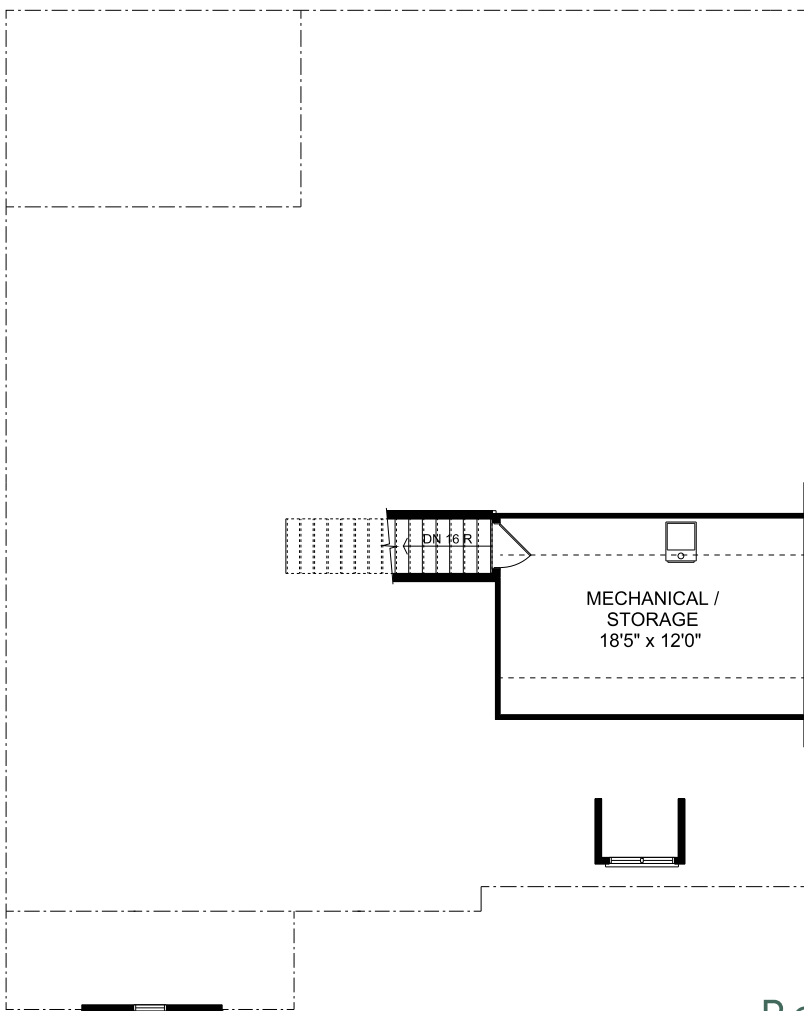
THE EMERSON

2-4 Bedrooms | 2-2.5 Bathrooms | Study | 2-Car Garage | 1,993+ Square Feet

ADDS
201 SQ. FT.



THE EMERSON
 ATTIC STORAGE



OPTIONAL
 BONUS ROOM CONFIGURATION

ADDS
409 SQ. FT.

