

# RUISSEAU



## BUILDING A

Elegant 3 Bedrooms | 3 Full Baths & 2 Half Baths | Study & Loft

First Floor Owner's Suite with Luxurious Bath and Walk-in Shower with Bench Seat

Gourmet Island Kitchen Opens to Dining and Great Room

Second Floor Features Loft, Secondary Bedrooms, Storage, and Outdoor Covered Patio

## TOWNHOME 5

2,589 Square Feet

300 Thistle Court, Woodstock, GA 30188

**\$678,439**

**HOMES & TOWNHOMES FROM THE \$500s**

**QUALITY OF LIFE | INSPIRED DESIGN | INTOWN LIVING**

**LIVEATRUISSEAU.COM**



138 Kingwood Drive | Woodstock, GA 30188 | 770.516.3678

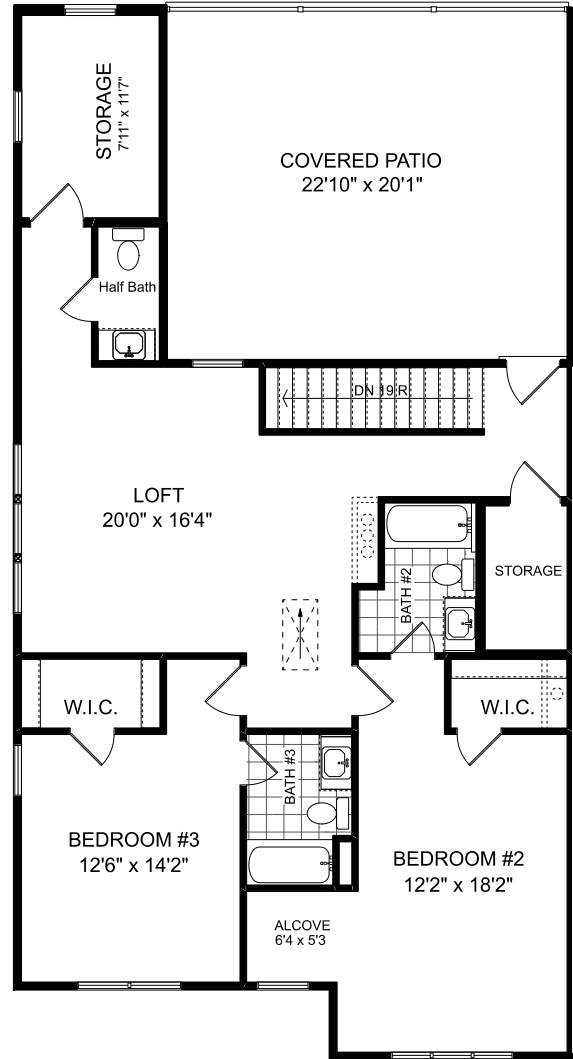
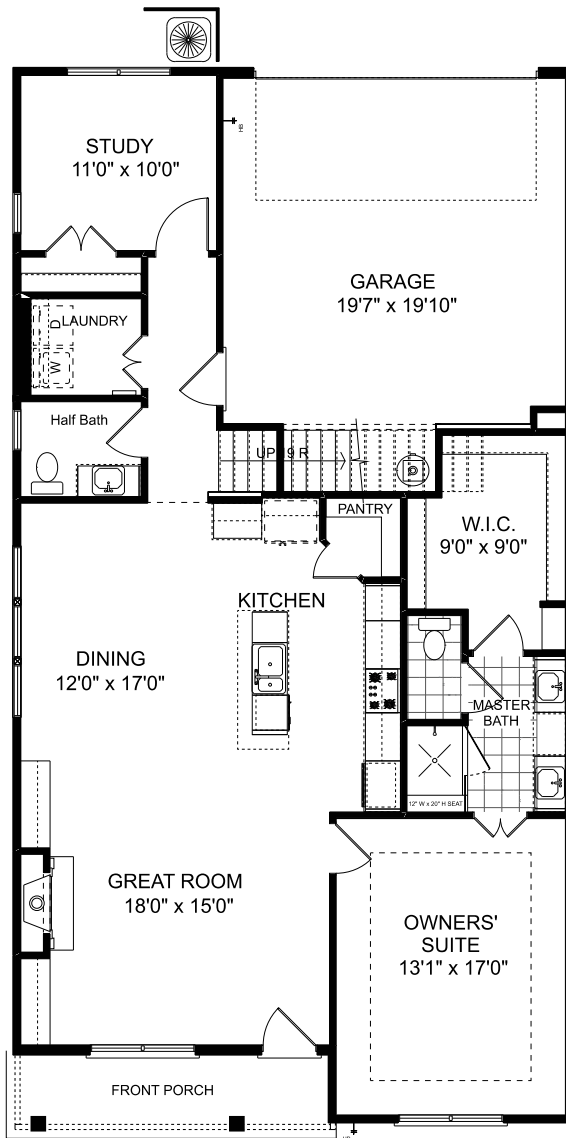
8.26.24

All illustrations, specifications, pricing and details are believed correct at the time of publication, Windsong Properties reserves the right to make changes, without notice or obligation. This brochure is for illustrative purposes only and not part of a legal contract. Information subject to changes, errors and omissions.

© 2023 Windsong Properties



# RUISSSEAU



HOMES & TOWNHOMES FROM THE \$500s

QUALITY OF LIFE | INSPIRED DESIGN | INTOWN LIVING

LIVEATRUISSEAU.COM

138 Kingwood Drive | Woodstock, GA 30188 | 770.516.3678

8.26.24



All illustrations, specifications, pricing and details are believed correct at the time of publication, Windsong Properties reserves the right to make changes, without notice or obligation. This brochure is for illustrative purposes only and not part of a legal contract. Information subject to changes, errors and omissions.  
© 2023 Windsong Properties

