



LEGACY DOWNS



THE WHITMORE

5 Bedrooms | 3.5 Bathrooms | 2-Car Garage | 3,380+ Square Feet

Homesite 51

432 Edgewater Trace, Canton GA 30115

Estimated Move-In Ready: July

\$658,530 - \$60K YOUR WAY PRICE: \$598,530



FEATURES:

First Floor Primary Suite Features a Luxurious Bathroom with Stand Alone Tub and Walk-in Closet

Gourmet Island Kitchen Opens to Great Room, Dining and Screened Rear Porch

Spacious Second Floor Family Entertainment Area Includes Loft, Reading Nook & Flex Space

Four Large Secondary Bedrooms with Walk-in Closets and 2 Secondary Baths Upstairs

Large Laundry Room and Office Space Complete the Spacious Second Floor Living Area

SIGNATURE HOMES FROM THE LOW \$600S

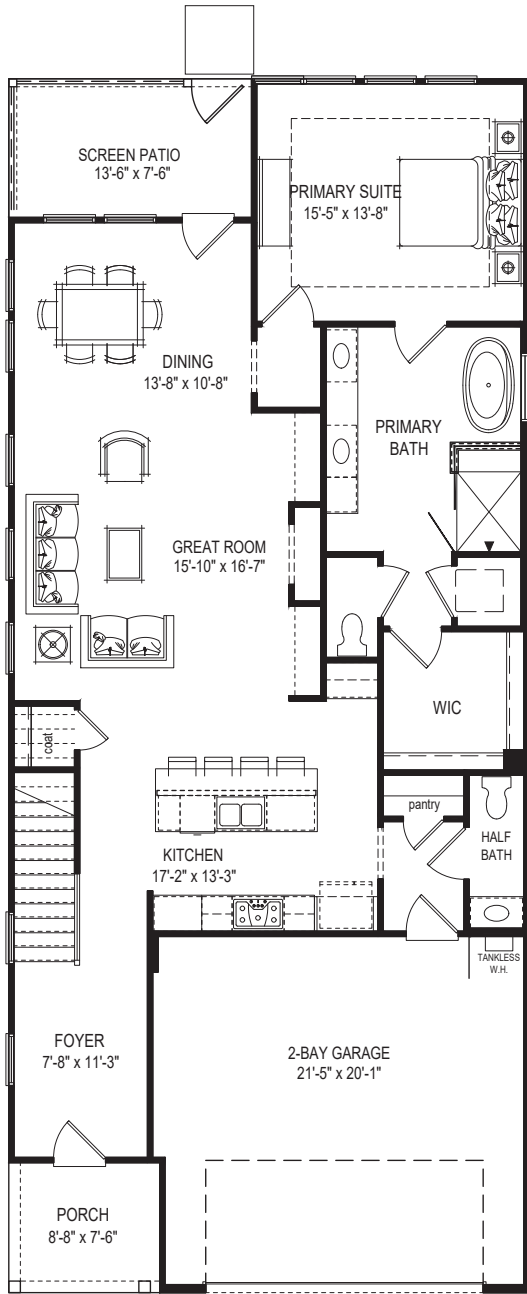
226 Legacy Downs Drive | Canton, GA 30115 | 943-302-0221 | windsonglife.com

All illustrations, specifications, pricing and details are believed correct at the time of publication. This brochure is for illustrative purposes only and not part of a legal contract. Information subject to changes, errors and omissions. © 2025 Windsong

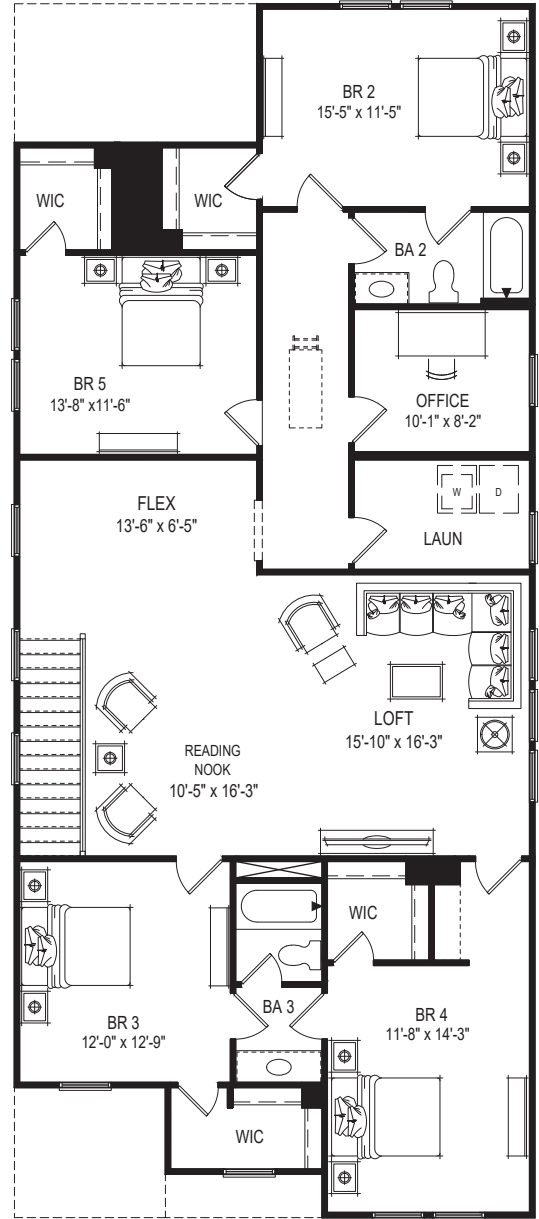


6.11.26





FIRST FLOOR



SECOND FLOOR



This offer valid on new home contracts written by July 31st that can close on or before December 17th, 2026. Offer is not valid for homes already sold, or homes currently under contract. Not valid on contingent contracts and only valid with a Windsong preferred lender. Offer of up to \$60,000 to be used for design selections, closing costs, buy down rate, or sales price reduction. Information is believed to be accurate but not warranted and is subject to changes, errors, and omissions. See sales for more information. 4.1.26

SIGNATURE HOMES FROM THE LOW \$600S

226 Legacy Downs Drive | Canton, GA 30115 | 943-302-0221 | windsonglife.com



All illustrations, specifications, pricing and details are believed correct at the time of publication. This brochure is for illustrative purposes only and not part of a legal contract. Information subject to changes, errors and omissions. © 2025 Windsong

6.11.26

