



THE ASHER

3 Bedrooms | 2 Bathrooms | Rear Screened Porch | 2-Car Garage | 1,445 Square Feet

Homesite 135

108 English Barn Way, Hiram, GA 30141

Estimated Move-In Ready: Now

\$475,110 - FLEX CASH PRICE; \$399,110



FEATURES:

3 Bedroom | 2 Bath Ranch Home | 2-Car Garage

Primary Suite with Luxurious Bath and Walk-in Shower with Bench Seat

Island Kitchen Opens to Dining and Great Room with Fireplace

Welcoming Front Porch and Rear Screened Porch with Fenced Courtyard Retreat

Mechanical Room Located off Garage for Ease of Accessibility

Beautiful 9' Ceilings Throughout with Universal Design Features for Comfort & Accessibility

A 55 OR BETTER COMMUNITY FROM THE \$400s

86 English Barn Way | Hiram, GA 30141 | 678.401.2306 | windsonglife.com

All illustrations, specifications, pricing and details are believed correct at the time of publication. This brochure is for illustrative purposes only and not part of a legal contract. Information subject to changes, errors and omissions. Echols Farm is a community designed for homeowners aged 55 and older, © 2025 Windsong

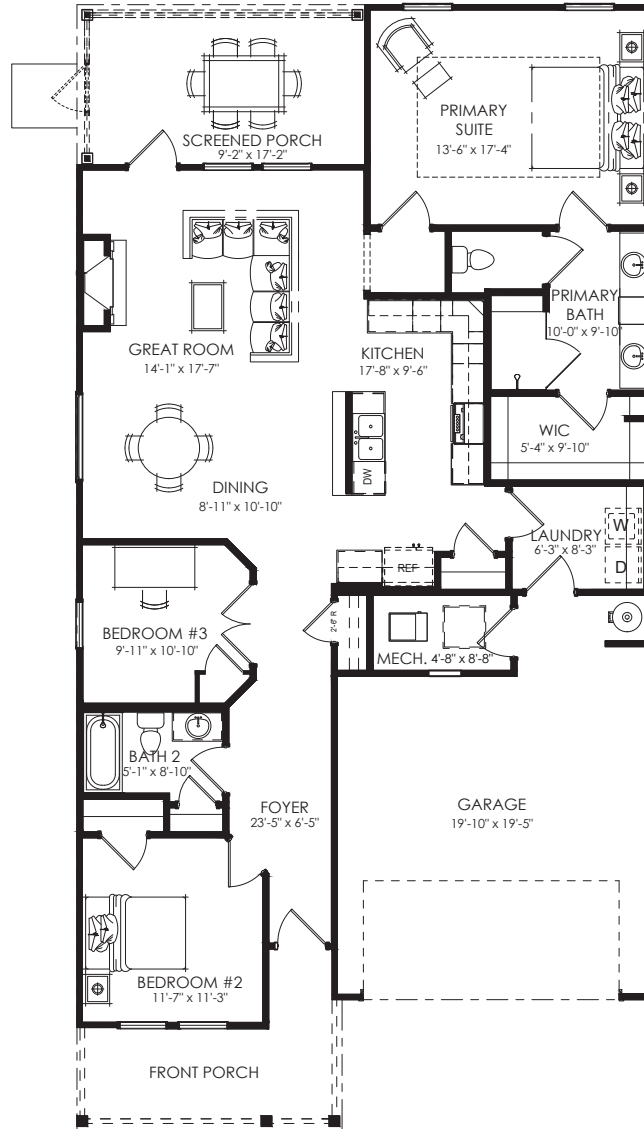


4.21.26



THE ASHER

3 Bedrooms | 2 Bathrooms | Rear Screened Porch | 2-Car Garage | 1,445 Square Feet



Offer valid on new home contracts of featured inventory homes that can close on or before May 31st, 2025. This offer is not valid for homes already sold, or homes currently under contract. Not valid on contingent contracts and only valid with Windsong preferred lender. Offer of up to \$76,000 to be used for design center upgrades where available, closing costs, buy down rate, or sales price reduction. Information is believed to be accurate but not warranted and is subject to changes, errors, and omissions. See sales for more information. 3.24.25

A 55 OR BETTER COMMUNITY FROM THE \$400s
 86 English Barn Way | Hiram, GA 30141 | 678.401.2306 | windsonglife.com

All illustrations, specifications, pricing and details are believed correct at the time of publication. This brochure is for illustrative purposes only and not part of a legal contract. Information subject to changes, errors and omissions. Echols Farm is a community designed for homeowners aged 55 and older, © 2025 Windsong

4.21.26

