

ASHBURY *Commons*



THE MILTON

3 Bedrooms | 3.5 Bathrooms | Covered Patio | 3-Car Garage | 3,073+ Square Feet

Homesite 14

687 Crest Line Trail, Powder Springs GA 30127

Estimated Move-In Ready: July

\$695,940



FEATURES:

- Spacious Great Room with Fireplace Opens to Dining, Kitchen, & Covered Patio
- Gourmet Island Kitchen with Walk-in Pantry and Family Entry From 3-Car Garage
- First Floor Primary Suite Features a Luxurious Bathroom with Free Standing Tub and Walk-in Closet
- Guest Bedroom and Private Study with Full Bath to Complete the First Floor
- Open Loft with Secondary Bedroom and Bathroom to Complete the Second Floor

This is the Life you've been Dreaming of

SIGNATURE HOMES FROM THE LOW \$600S

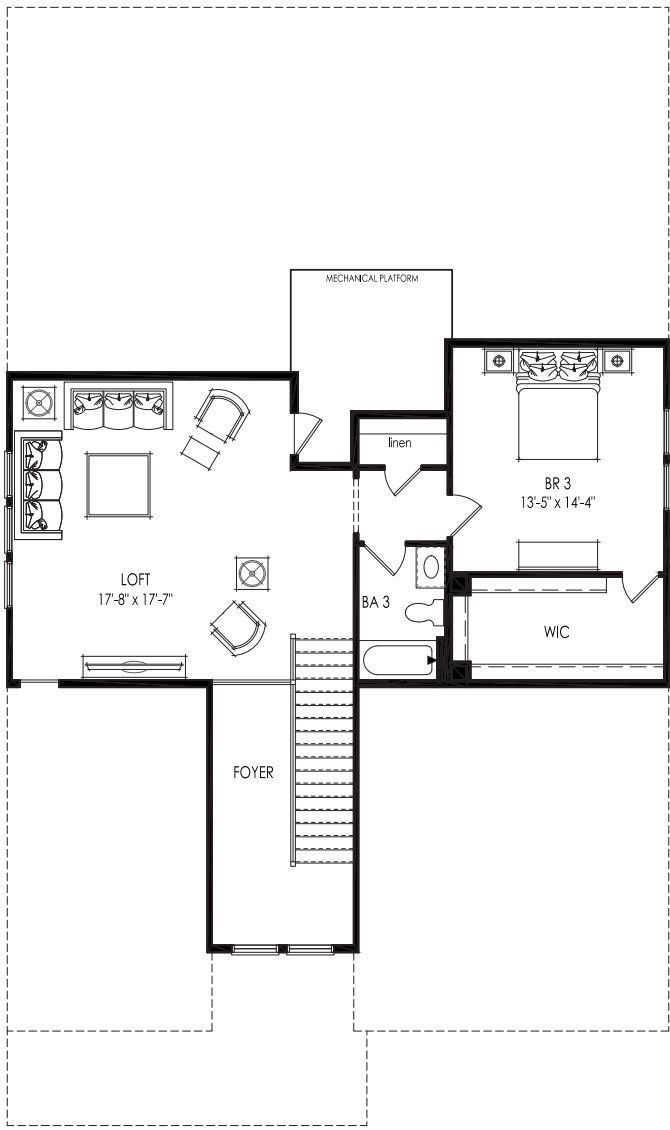
739 Crest Line Trail | Powder Springs, GA 30127 | 678.355.8736 | windsonglife.com

All illustrations, specifications, pricing and details are believed correct at the time of publication. This brochure is for illustrative purposes only and not part of a legal contract. Information subject to changes, errors and omissions. © 2025 Windsong

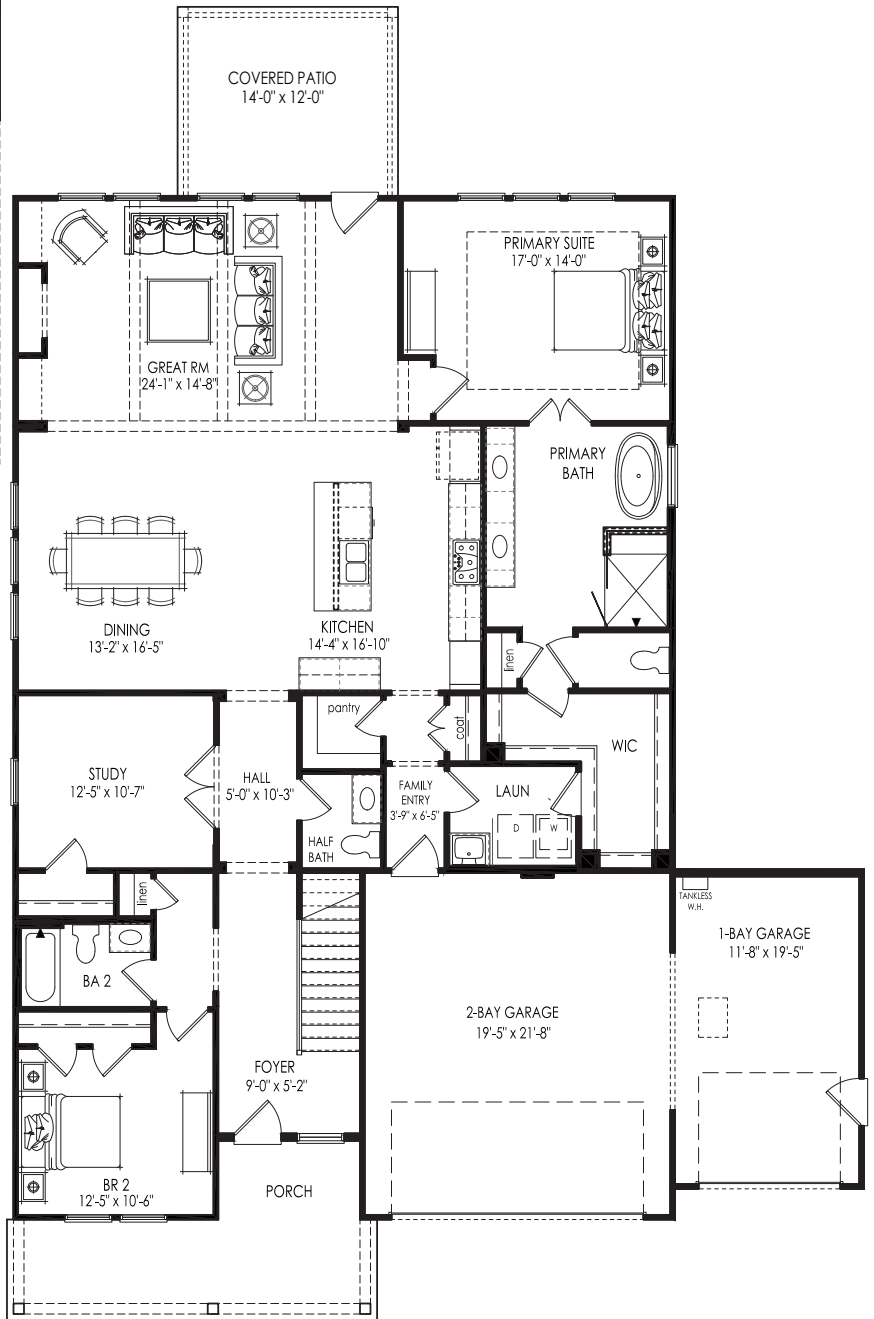


3.23.26





SECOND FLOOR



FIRST FLOOR