



## THE ASHLYNN

3 Bedrooms | 3 Bathrooms | Study | Rear Screened Porch | 2-Car Garage | 1,911 Square Feet

**Homesite 229**  
225 Harvest Trail, Hiram, GA 30141  
Estimated Move-In Ready: Mar  
**\$510,120**



### FEATURES:

3 Bedroom | 3 Bath Ranch Home | Study | 2-Car Garage  
Second Floor Bonus Room/Bedroom, Full Bath, and Storage  
Primary Suite with Luxurious Bath and Walk-in Shower with Bench Seat  
Island Kitchen Opens to Dining and Great Room with Fireplace  
Welcoming Front Porch and Rear Covered Patio with Fenced Courtyard Retreat  
Beautiful 9' Ceilings Throughout with Universal Design Features for Comfort & Accessibility

A 55 OR BETTER COMMUNITY FROM THE \$400s  
10 Lantern Trace | Hiram, GA 30141 | 678.401.2306 | [windsonglife.com](http://windsonglife.com)

All illustrations, specifications, pricing and details are believed correct at the time of publication. This brochure is for illustrative purposes only and not part of a legal contract. Information subject to changes, errors and omissions. Echols Farm is a community designed for homeowners aged 55 and older, © 2025 Windsong

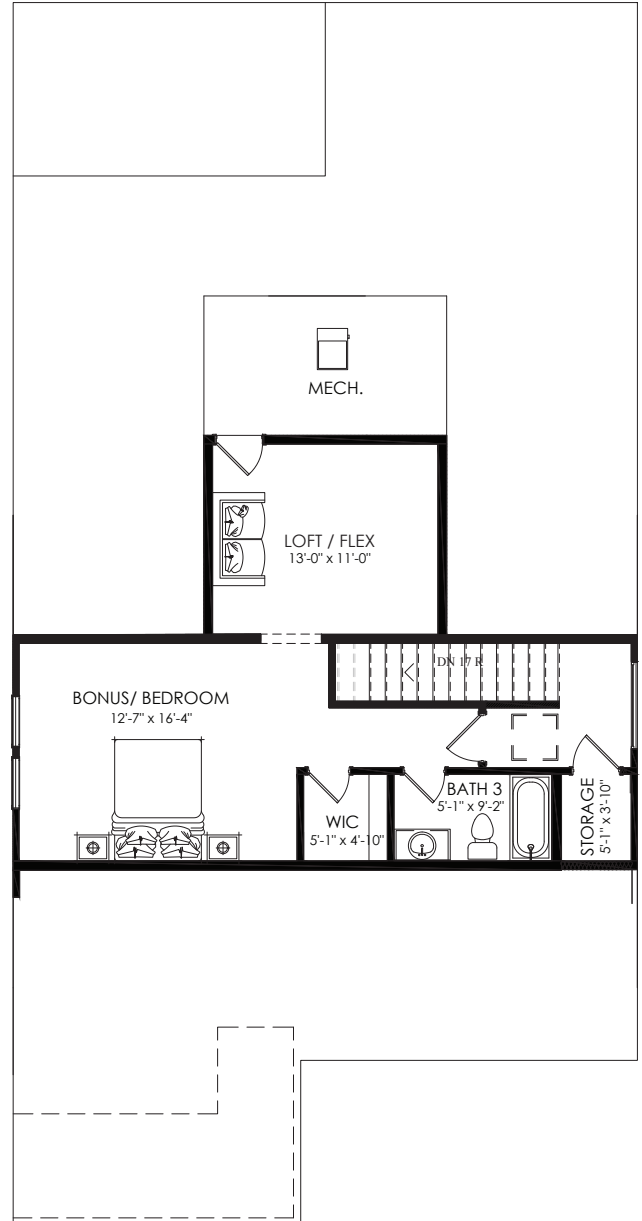
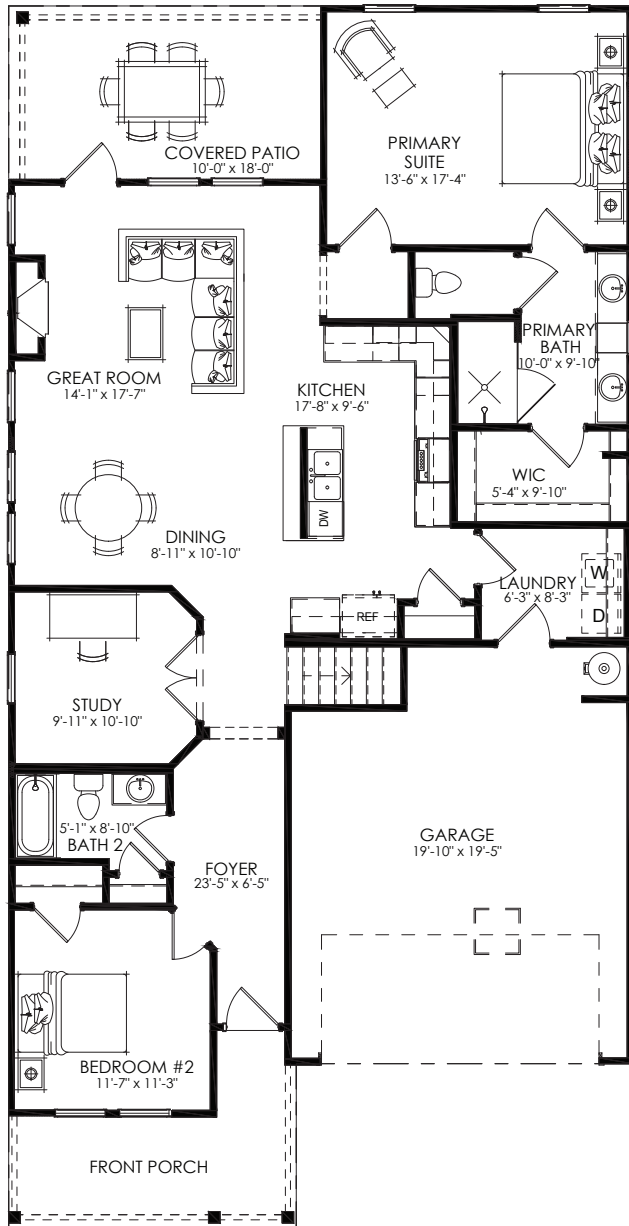


1.15.26



# THE ASHLYNN

3 Bedrooms | 3 Bathrooms | Study | Rear Screened Porch | 2-Car Garage | 1,911 Square Feet



A 55 OR BETTER COMMUNITY FROM THE \$400s  
 10 Lantern Trace | Hiram, GA 30141 | 678.401.2306 | windsonglife.com

All illustrations, specifications, pricing and details are believed correct at the time of publication. This brochure is for illustrative purposes only and not part of a legal contract. Information subject to changes, errors and omissions. Echols Farm is a community designed for homeowners aged 55 and older, © 2025 Windsong