



THE MAPLEWOOD

2 Bedrooms | 2 Bathrooms | Study | Covered Side Patio | 2-Car Garage | 2,098 Square Feet

Homesite 247

302 Harvest Trail, Hiram, GA 30141

Estimated Move-In Ready: Jan

\$525,976



FEATURES:

2 Bedroom | 2 Bath Ranch Home | Study | 2-Car Garage

Second Floor Attic Storage Accessed by Permanent Stairs

Primary Suite with Luxurious Bath and Walk-in Shower with Bench Seat

Island Kitchen Opens to Dining and Great Room with Fireplace

Welcoming Front Porch and Side Covered Patio with Fenced Courtyard Retreat

Beautiful 9' Ceilings Throughout with Universal Design Features for Comfort & Accessibility

A 55 OR BETTER COMMUNITY FROM THE \$400s

10 Lantern Trace | Hiram, GA 30141 | 678.401.2306 | windsonglife.com



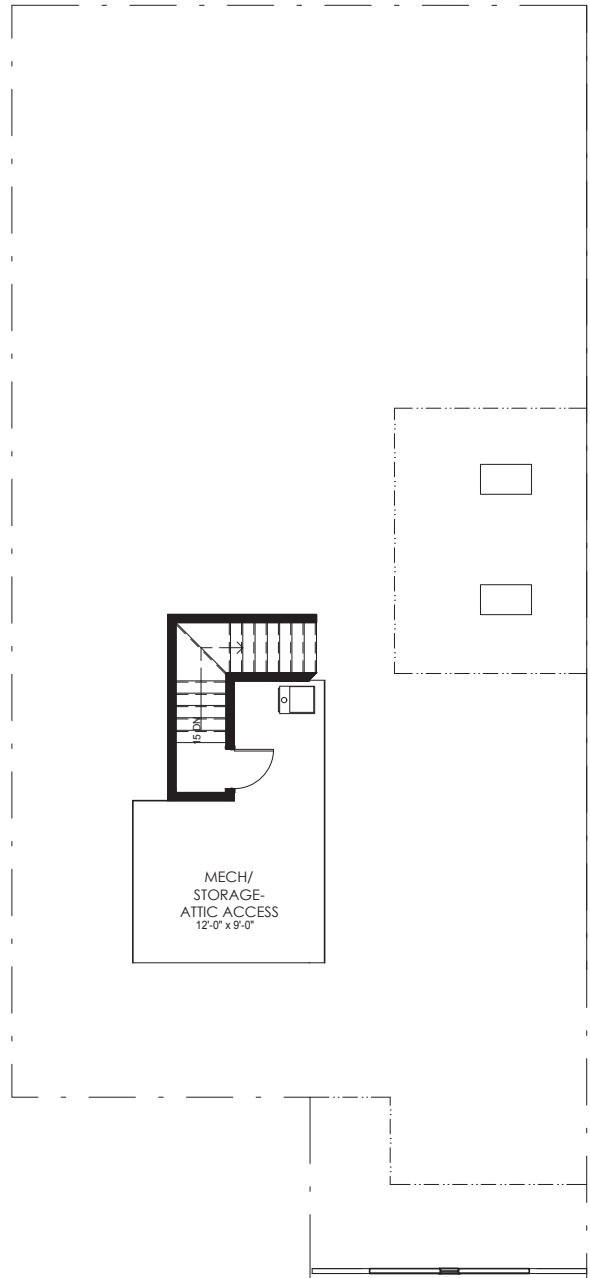
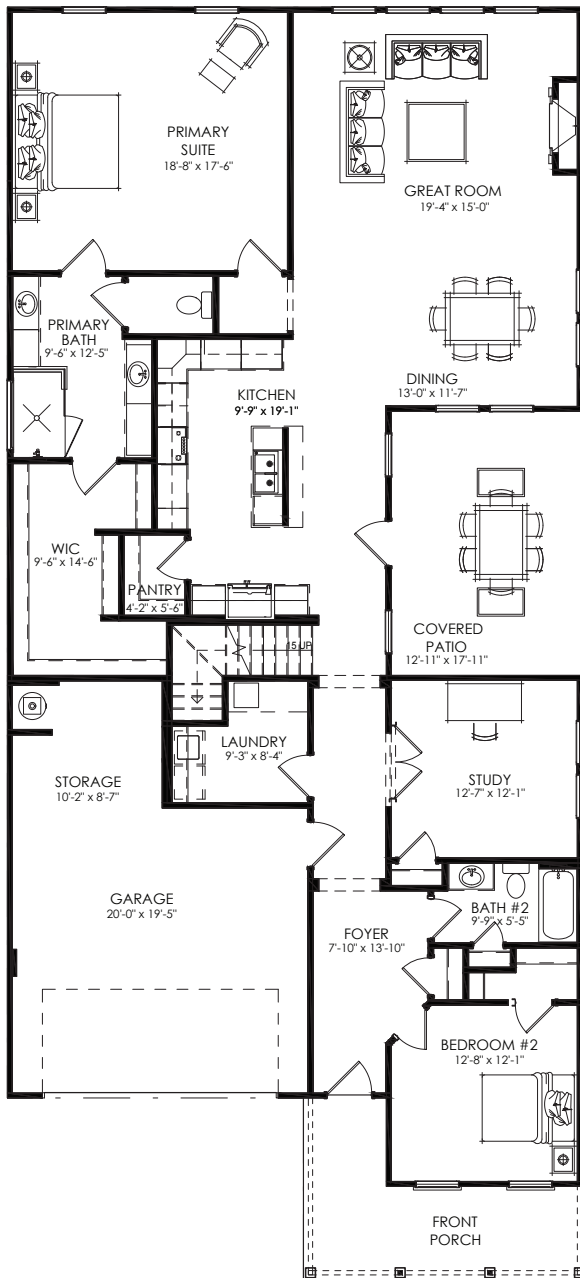
All illustrations, specifications, pricing and details are believed correct at the time of publication. This brochure is for illustrative purposes only and not part of a legal contract. Information subject to changes, errors and omissions. Echols Farm is a community designed for homeowners aged 55 and older, © 2025 Windsong

9.29.25



THE MAPLEWOOD

2 Bedrooms | 2 Bathrooms | Study | Covered Side Patio | 2-Car Garage | 2,098 Square Feet



A 55 OR BETTER COMMUNITY FROM THE \$400s

10 Lantern Trace | Hiram, GA 30141 | 678.401.2306 | windsonglife.com



All illustrations, specifications, pricing and details are believed correct at the time of publication. This brochure is for illustrative purposes only and not part of a legal contract. Information subject to changes, errors and omissions. Echols Farm is a community designed for homeowners aged 55 and older, © 2025 Windsong



9.29.25