



ASHBURY *Commons*



THE WESLEYAN

6 Bedrooms | 5 Bathrooms | First Floor Generational Suite | 2-Car Garage | 3,998+ Square Feet

Homesite 8

715 Crest Line Trail, Powder Springs GA 30127

Estimated Move-In Ready: Jan

\$810,550 - FLEX CASH PRICE \$795,550



FEATURES:

Spacious Great Room with Fireplace Opens to Dining, Kitchen, Sunroom, & Extended Patio

Gourmet Island Kitchen with Walk-in Pantry and Family Entry From 2-Car Garage

Separated & Private First Floor Generational Suite with Living Area, Kitchen, & Laundry Closet

Gracious Second Floor Primary Suite Features a Luxurious Bathroom with Free Standing Tub and Walk-in Closet

Three Large Secondary Bedrooms and Two Bathrooms Complete the Second Floor

This is the life you've been Dreaming of

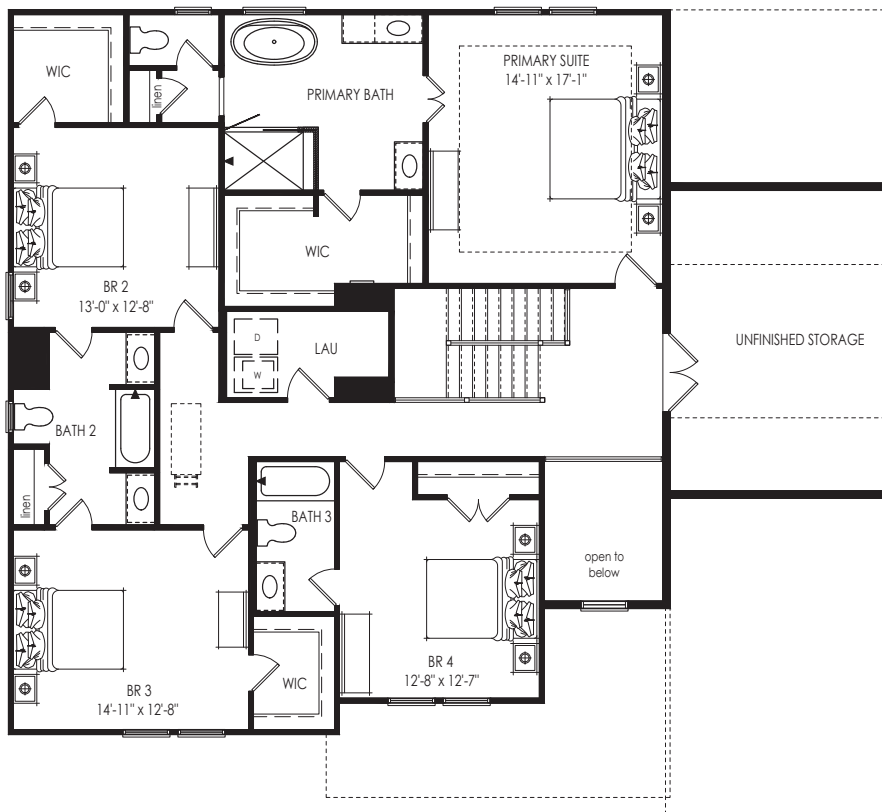
SIGNATURE HOMES FROM THE LOW \$600S

739 Crest Line Trail | Powder Springs, GA 30127 | 678.355.8736 | windsonglife.com

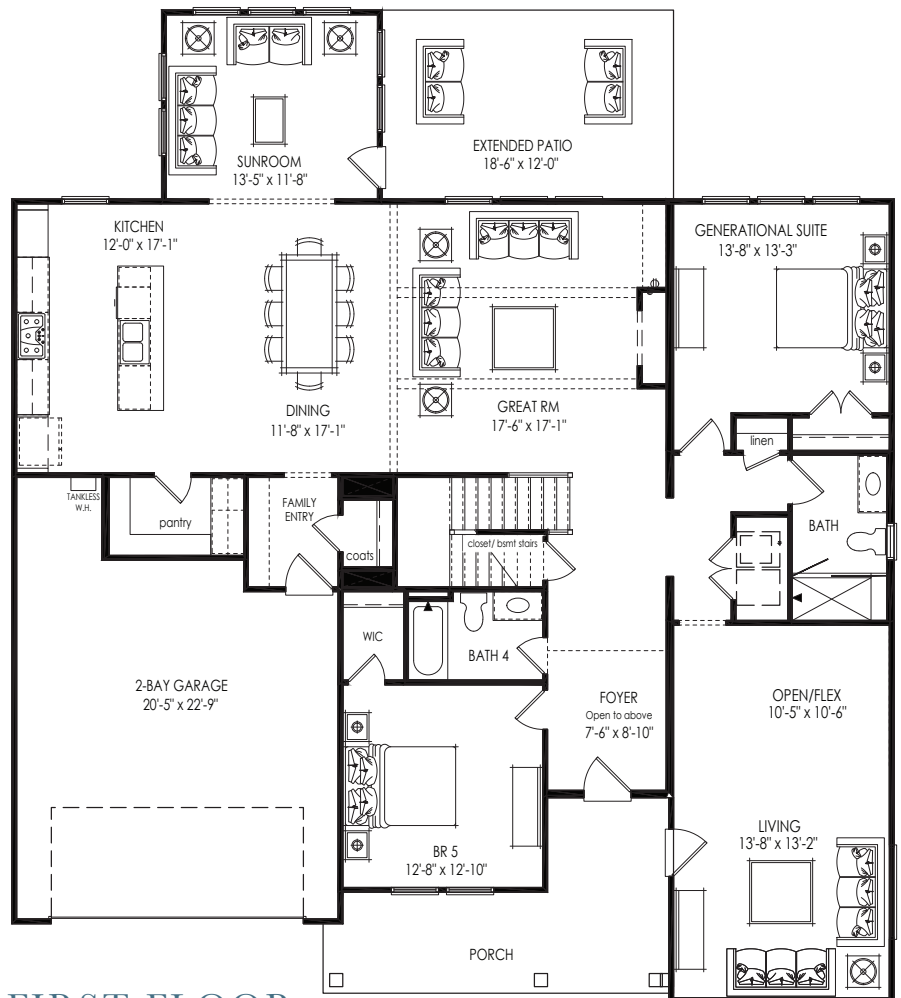
All illustrations, specifications, pricing and details are believed correct at the time of publication. This brochure is for illustrative purposes only and not part of a legal contract. Information subject to changes, errors and omissions. © 2025 Windsong

9.26.25





SECOND FLOOR



FIRST FLOOR



Offer valid on new home contracts of featured inventory homes written between Aug. 15th and Oct 31st, 2025 that can close on or before December 23rd, 2025. This offer is not valid for homes already sold, or homes currently under contract. Not valid on contingent contracts and only valid with Windsong preferred lender. Offer of up to \$15,000 to be used for design center upgrades where available, closing costs, buy down rate, or sales price reduction. Information is believed to be accurate but not warranted and is subject to changes, errors, and omissions. See sales for more information. 9.26.25