

THE PRIMROSE



ELEVATION A



ELEVATION B



ELEVATION C



ELEVATION D

ASHBURY
Commons

THE PRIMROSE

4-5 Bedrooms | 3.5-5 Bathrooms | 2-3 Car Garage | 3,114+ Square Feet



STANDARD FEATURES:

- Spacious Two-Story Home | 4 Bedroom | 3.5 Bath | Dining
- Spacious Gourmet Island Kitchen with Walk-in Pantry Opens to Great Room
- Private First Floor Primary Suite with Sitting room and Large Walk-In Closet
- Luxurious Primary Bath Featuring Standing Tub and Walk-in Shower with Bench Seat
- Second Floor Features Loft, 3 Secondary Bedrooms, 2 Baths, Flex Space and Storage

This is the life you've been Dreaming of

SIGNATURE HOMES FROM THE HIGH \$600S

739 Crest Line Trail | Powder Springs, GA 30127 | 678.355.8736 | windsonglife.com

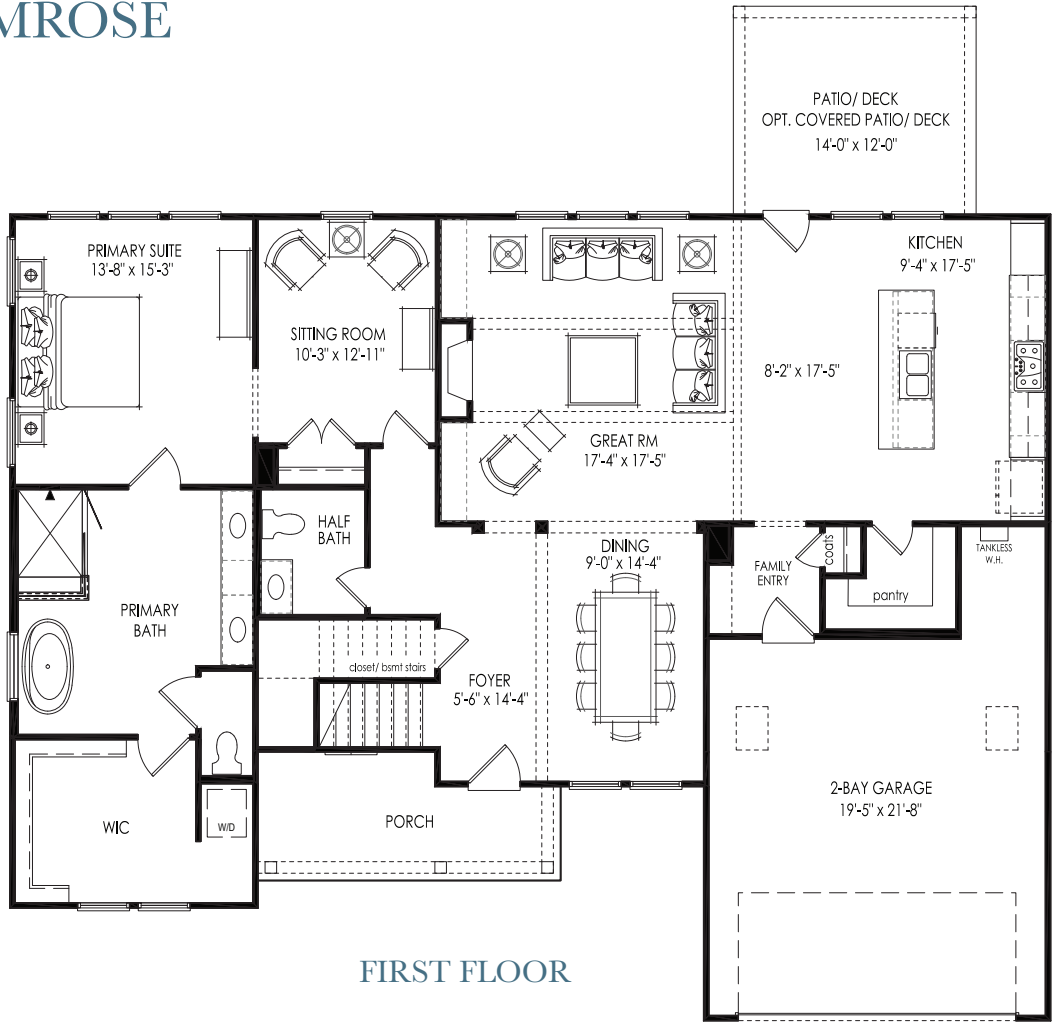


All illustrations, specifications, pricing and details are believed correct at the time of publication. This brochure is for illustrative purposes only and not part of a legal contract. Information subject to changes, errors and omissions. © 2025 Windsong

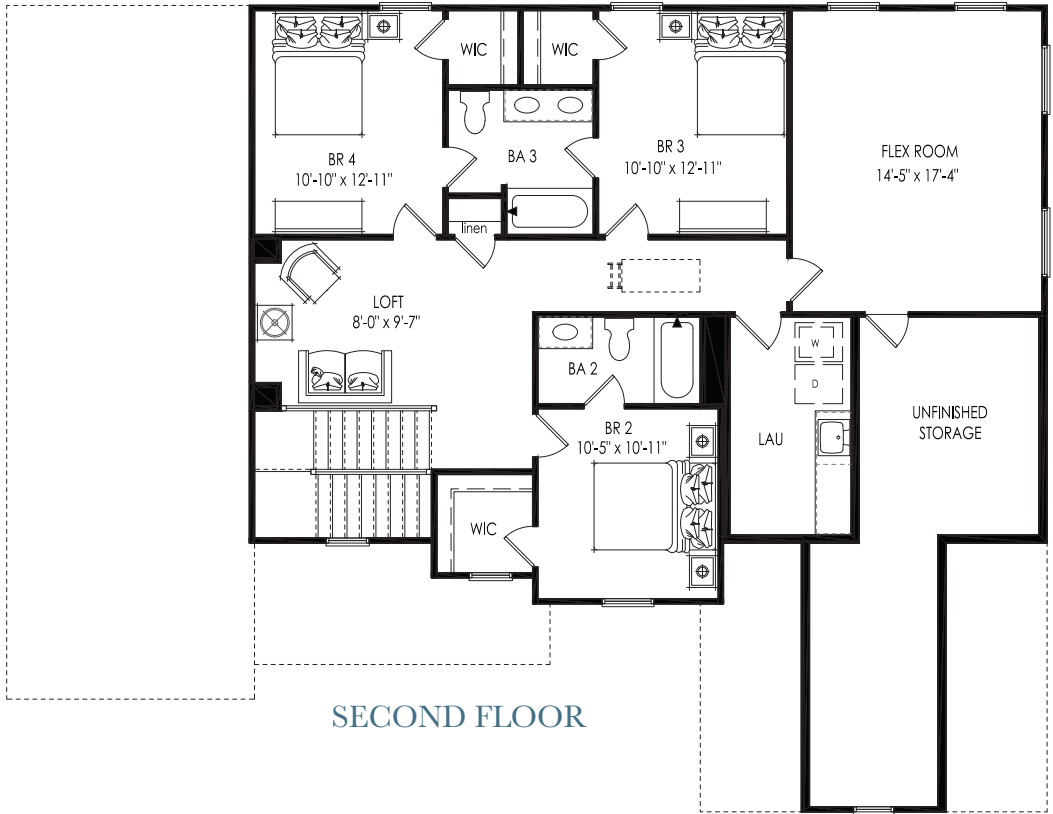
7.25.25



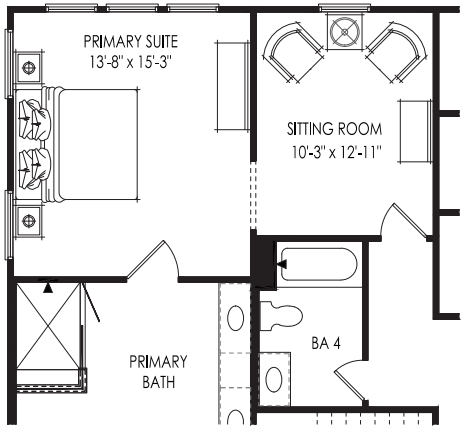
THE PRIMROSE



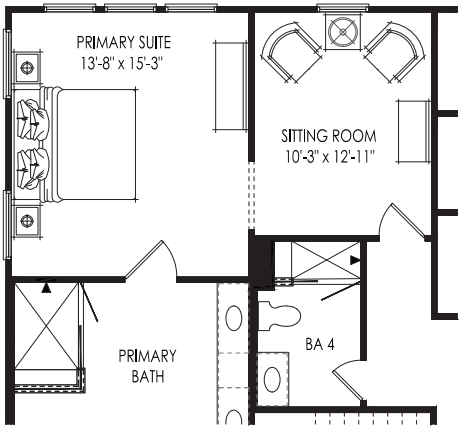
FIRST FLOOR



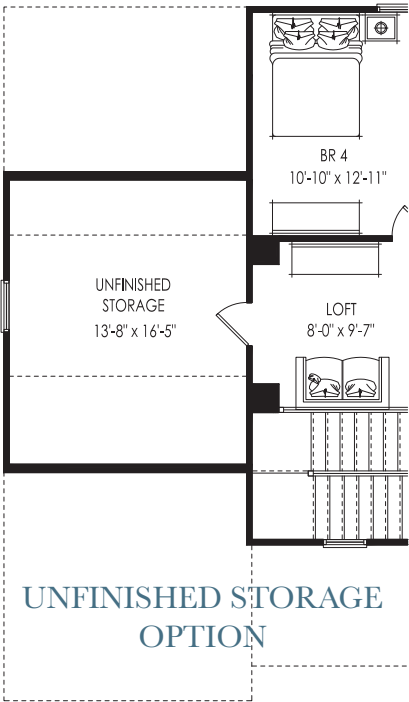
SECOND FLOOR



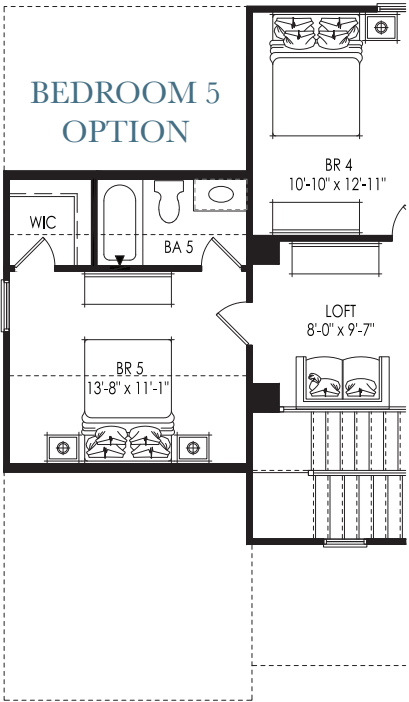
BATH 4 OPTION



BATH 4 SHOWER OPTION



UNFINISHED STORAGE
OPTION



BEDROOM 5
OPTION

SIGNATURE HOMES FROM THE HIGH \$600S
739 Crest Line Trail | Powder Springs, GA 30127 | 678.355.8736 | windsonglife.com



All illustrations, specifications, pricing and details are believed correct at the time of publication. This brochure is for illustrative purposes only and not part of a legal contract. Information subject to changes, errors and omissions. © 2025 Windsong

