



THE ASHLYNN

3 Bedrooms | 3 Bathrooms | Study | Rear Screened Porch | 2-Car Garage | 1,911 Square Feet

Homesite 125

119 English Barn Way, Hiram, GA 30141
Estimated Move-In Ready: Sept
\$524,645



FEATURES:

3 Bedroom | 3 Bath Ranch Home | Study | 2-Car Garage

Second Floor Bonus Room/Bedroom, Full Bath, and Storage

Primary Suite with Luxurious Bath and Walk-in Shower with Bench Seat

Gourmet Island Kitchen Opens to Dining and Great Room with Fireplace

Welcoming Front Porch and Rear Screened Porch with Fenced Courtyard Retreat

Beautiful 9' Ceilings Throughout with Universal Design Features for Comfort & Accessibility

A 55 OR BETTER COMMUNITY FROM THE \$400s

10 Lantern Trace | Hiram, GA 30141 | 678.401.2306 | windsonglife.com

All illustrations, specifications, pricing and details are believed correct at the time of publication. This brochure is for illustrative purposes only and not part of a legal contract. Information subject to changes, errors and omissions. Echols Farm is a community designed for homeowners aged 55 and older, © 2025 Windsong

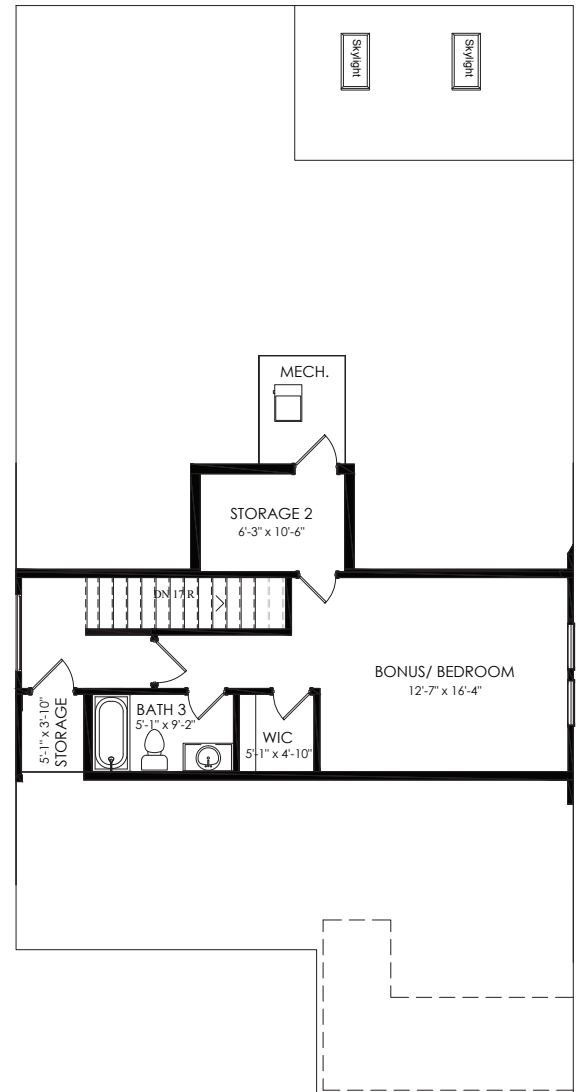
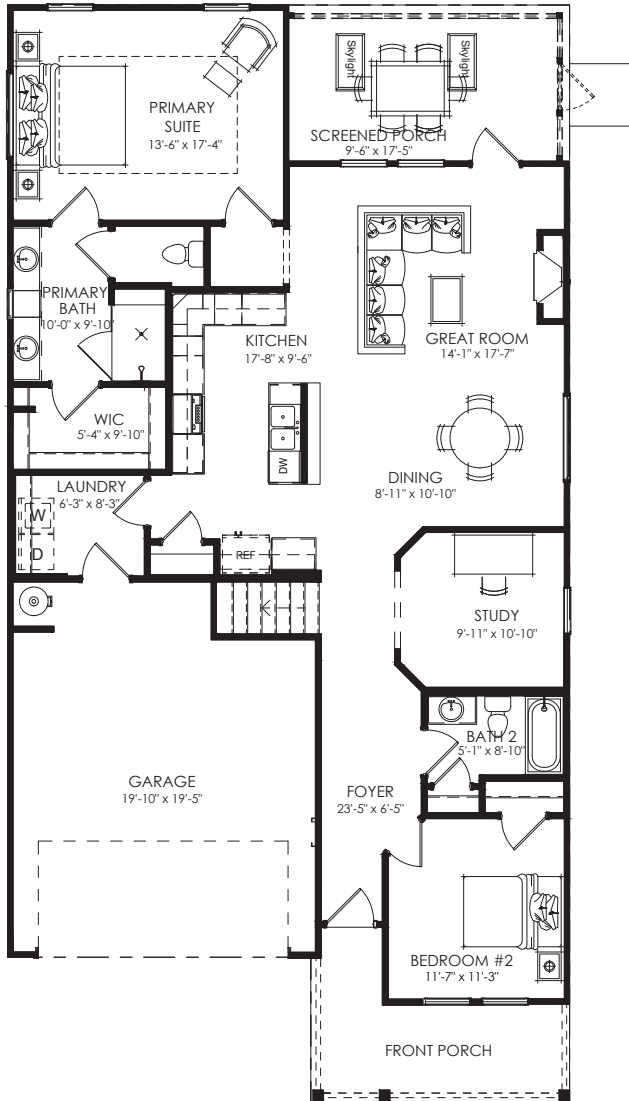


5.13.25



THE ASHLYNN

3 Bedrooms | 3 Bathrooms | Study | Rear Screened Porch | 2-Car Garage | 1,911 Square Feet



A 55 OR BETTER COMMUNITY FROM THE \$400s
 10 Lantern Trace | Hiram, GA 30141 | 678.401.2306 | windsonglife.com

All illustrations, specifications, pricing and details are believed correct at the time of publication. This brochure is for illustrative purposes only and not part of a legal contract. Information subject to changes, errors and omissions. Echols Farm is a community designed for homeowners aged 55 and older, © 2025 Windsong



5.13.25

