

# RUISSÉAU



**\$10,000 IN CLOSING COSTS**

## BUILDING B

Elegant 3 Bedrooms | 3 Full Baths & 2 Half Baths | Study & Loft

First Floor Owner's Suite with Luxurious Bath and Walk-in Shower with Bench Seat

Gourmet Island Kitchen Opens to Dining and Great Room

Second Floor Features Loft, Secondary Bedrooms, Storage, and Outdoor Covered Patio

## TOWNHOME 13

2,589 Square Feet

405 Nettle Court, Woodstock, GA 30188

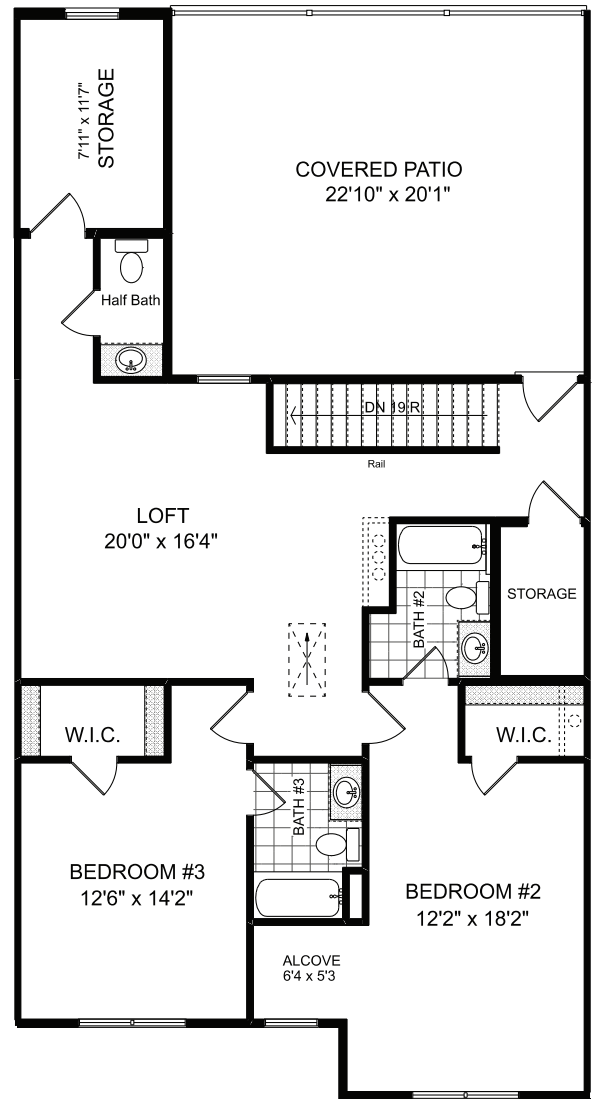
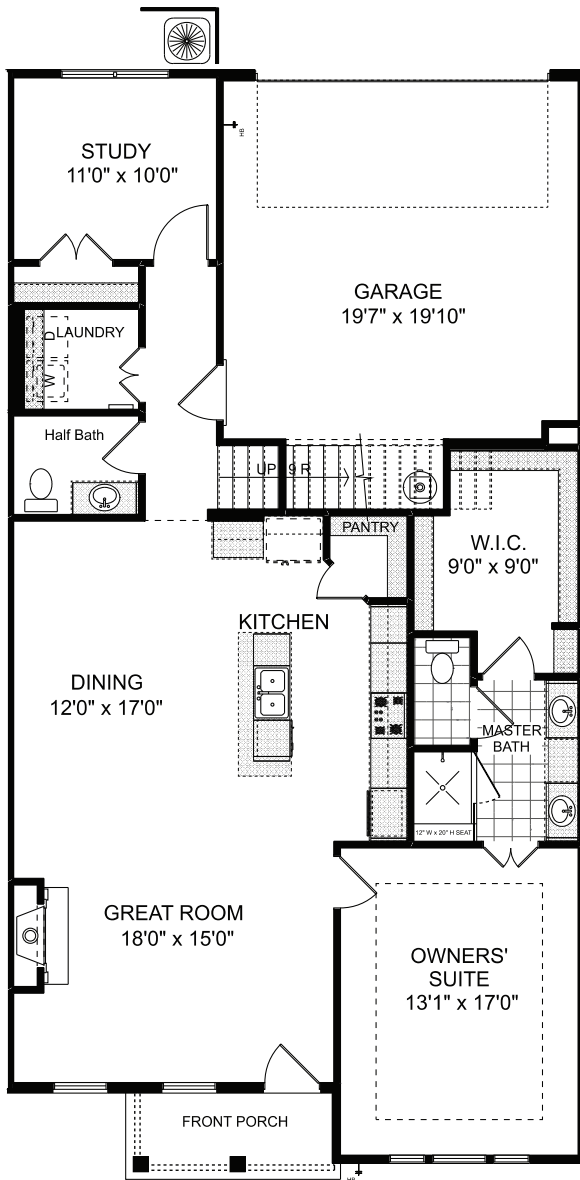
**\$649,804**

### SALES BY APPOINTMENT ONLY

Contact 770.516.3678 to Schedule an Appointment | [windsonglife.com](http://windsonglife.com)

All illustrations, specifications, pricing and details are believed correct at the time of publication. This brochure is for illustrative purposes only and not part of a legal contract. Information subject to changes, errors and omissions. \$10,000 in closing costs offer valid on new home contracts with preferred lender that can close on or before May 31st, 2025. See sales for details. © 2025 Windsong

# RUISSEAU



## SALES BY APPOINTMENT ONLY

Contact 770.516.3678 to Schedule an Appointment | [windsonglife.com](http://windsonglife.com)



All illustrations, specifications, pricing and details are believed correct at the time of publication. This brochure is for illustrative purposes only and not part of a legal contract. Information subject to changes, errors and omissions. \$10,000 in closing costs offer valid on new home contracts with preferred lender that can close on or before May 31st, 2025. See sales for details. © 2025 Windsong

4.22.25

